

# Newsletter – February 2026



Dear Parents and carers,

We would like to start by saying a warm Welcome to Kobi, who has joined our Discovery room, and Bonnie, who has joined our Explorer Room. Both have settled in beautifully, making lots of friends and joining in with a variety of exciting activities.



**Theme of the term**- Moving into February we will continue exploring the world around us and watching as the weather changes to show the first signs of spring. We have already begun to look out for daffodils, as some have been growing in our garden!

After half term, we will be moving on to exploring colour and how it can be mixed to create new colours. To support this theme the week commencing 23<sup>rd</sup> of February it will be colour week! With a different colour to wear each day:

- Monday- Red
- Tuesday- Yellow
- Wednesday- Blue
- Thursday- Green
- Friday- Pink



**Employee of the month**-



Abbie is our employee of the month!

Thank you for all the smiles, support and care you give to the children,  
You are Amazing! And a great part of our team!

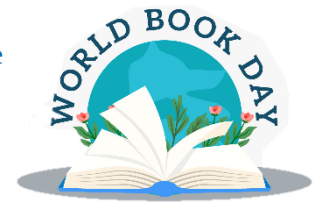
**Pancake Day**- Shrove Tuesday is on the 17<sup>th</sup> we will be having pancake flipping competitions, making pancake mix and of course eating and tasting pancakes with different toppings.



**Chinese New Year** - It's the year of the horse! Chinese New Year is on Tuesday 17<sup>th</sup> of February. We will be celebrating on Wednesday the 18<sup>th</sup> with a delicious Chinese dinner and lots of Chinese themed arts and crafts including dancing with our own dragon costume. Children in the Creative Room have also decided to turn their home corner into a Chinese takeaway, so if anyone has any spare menus that we could have that would be very much appreciated.



**World Book Week**- World book Day is on the 5<sup>th</sup> of March, but we will be celebrating all week, starting the 2<sup>nd</sup> of March. Children are encouraged to dress up all week as their favourite story book character (wear what you have available no need to purchase a new outfit) and bring their favourite stories to share with their friends. The staff will all be joining in the fun too, I wonder if you can guess who we are dressed as. Book vouchers will also be given to the children where they can use them to claim their very own free book. Please do send us in a Tapestry of your child taking them in to the book shop.

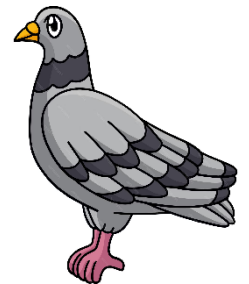


**Family App**- We will be switching from Tapestry to Family App in the next few weeks or so. This is a new platform where we can share observations and updates about your child's day. You will also have access to your finances through this platform making paying and receiving invoices more efficient. Similar to how you set up your Tapestry accounts, you will receive an email link to activate your account so please keep an eye on your email inbox. Using these new services will be a learning curve for both you and us, so please do bear with us for the first few weeks.



**Alpaca Farm**- It's the time of year again where we begin to plan exciting outings for you to be a part of. We will be going to the Alpaca farm on the 3<sup>rd</sup> of March, this will be a trip available for the children in the Creative room and some of the children from Explorer room. A letter will go out to invite children as soon as possible. There will be spaces available for parents/carers to join us on this trip which will be first come, first served.

**Bird watch**- We had a very successful bird watch! Some of the children even bought their own binoculars to join in the fun and those who didn't designed their very own using paper. We looked in our books at nursery to spot different types of birds, such as pigeons, magpies and robins and tried our best to spot them outside using our binoculars. Unfortunately, the weather wasn't on our side and most of the birds seemed to be hiding from the cold, though we did spot a couple of pigeons in their nest in one of our nursery trees!



### **Dates for your diary:**

- 14<sup>th</sup> February- Valentines day
- Week commencing 16<sup>th</sup> February- half term week- No term time only children
  - 17<sup>th</sup> February- Pancake day (shrove Tuesday)
- 17<sup>th</sup> February- Chinese New Year (nursery celebration 18<sup>th</sup>)
  - Week commencing 2<sup>nd</sup> March- World book week
    - 3<sup>rd</sup> March – Alpaca Farm Trip
    - 5<sup>th</sup> March- World book day

